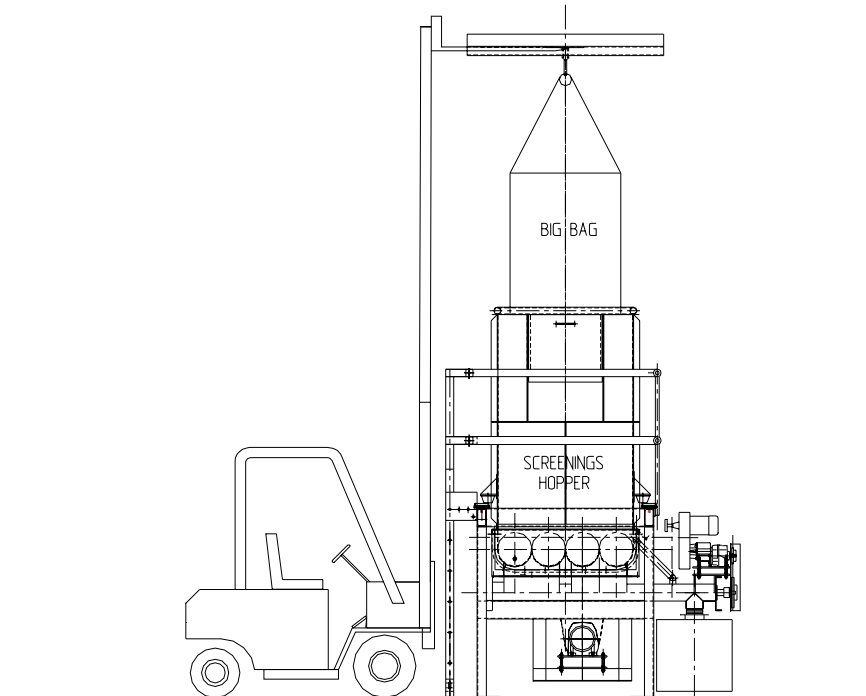


Project

Data Sheet



Paper Screenings Handling

Installed 1998 - Contract Value £20,000

Client: OSC Process Engineering Ltd for Welsh Water

Technical Data		Plant Description
Infeed Hopper	- 1100 x 1100 (1.5m ³) Mounted on load cells	Paper screening from a sewage processing plant is delivered in big-bags, having a flat bottom which is slit with a knife and fed into a hopper.
Screw Discharger	- 250 dia x 1100 long Quadruple ribbon bladed	Discharge is by a multi-worm discharger with a screw feeder, having variable speed to feed between 30 -150 Kg/hour, based on a bulk density of 300 Kg/m ³
Screw Feeder	- 120 dia x 1800 long Variable speed	

Cleeve 
MATERIALS HANDLING LIMITED

Suite 12, Lightpill Mill, Bath Road Trading Estate, Stroud, Glos. GL5 3QF

Tel : 01453 750085 Fax : 01453 766776 Email : info@cleevemh.co.uk Web Site: <http://www.cleevemh.co.uk>