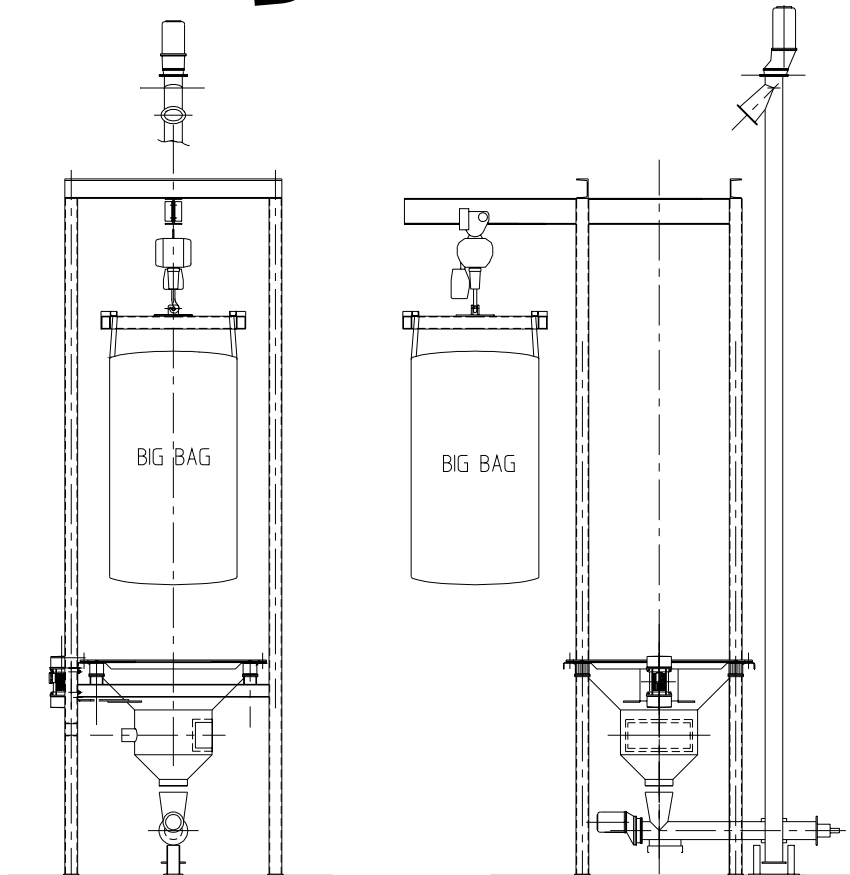


# Project

## Data Sheet



### Big-Bag Handling System for Bentonite Installed 1997

Technical Data		Plant Description
Material	- Bentonite	<p>Big-bags of Bentonite are loaded by an electric hoist onto the big-bag discharge station and the outlet neck tie released through an access door.</p> <p>Discharge is ensured by vibration and material elevated at a rate of 50 - 100 Kg/hour to a height of 7.5 metres.</p>
Bulk Density	- 800 - 1000 Kg/m <sup>3</sup>	
Big-Bag Capacity	- 1200 Kg	
Discharge Station	- VB1350/5137	
Vertical Screw Elevator	- 125 dia x 7,600 lift	

**Cleeve**   
**MATERIALS HANDLING LIMITED**

Suite 12, Lightpill Mill, Bath Road Trading Estate, Stroud, Glos. GL5 3QF

Tel : 01453 750085 Fax : 01453 766776 Email : [info@cleevemh.co.uk](mailto:info@cleevemh.co.uk) Web Site : <http://www.cleevemh.co.uk>